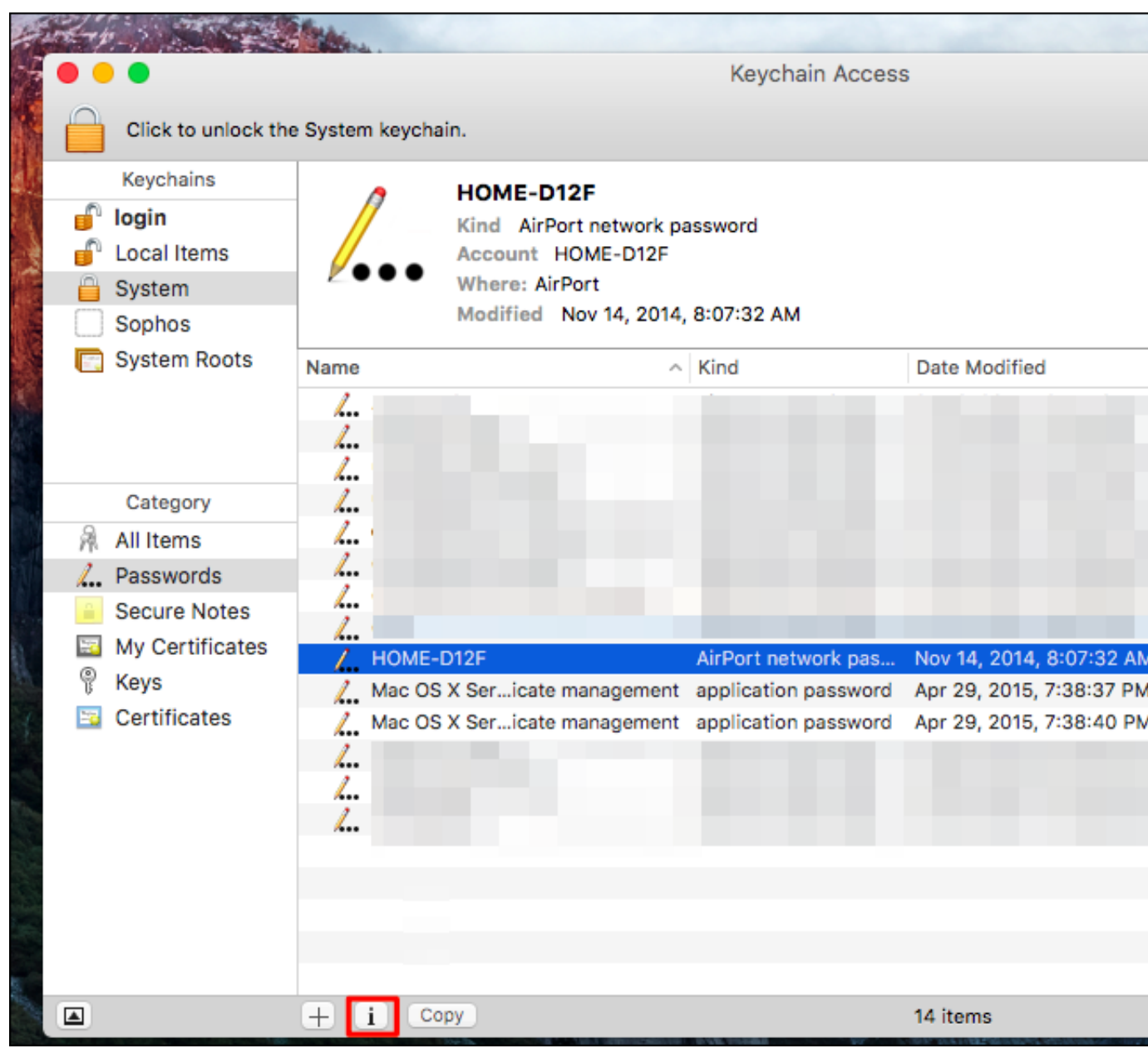




[Program That Manages Wireless Networks For Mac Osx](#)



[Program That Manages Wireless Networks For Mac Osx](#)



---

There is a really good chance that on your Mac, the WiFi management section is the area you access most frequently. This is particularly true if you travel regularly and need to connect to different WiFi networks at different locations. When you click the Wi-Fi icon in OS X's menu bar (called AirPort before OS X Lion), you get a list of available wireless networks. In our daily lives, we connect to a number of WiFi networks on our phones. At one time, a typical Mac user would have connected a couple of computers to the Internet via a local network than they would have extracted their own kidney. Here's how you can prioritize WiFi networks on OS X, making clear which wireless hotspot your Mac connects to first. If you just mentioned the Airport: Scan your local wireless environment from the command line.

et1041Self